

Parallel Offsets (Steps)

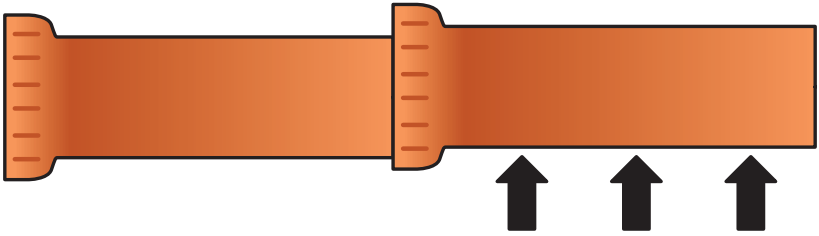
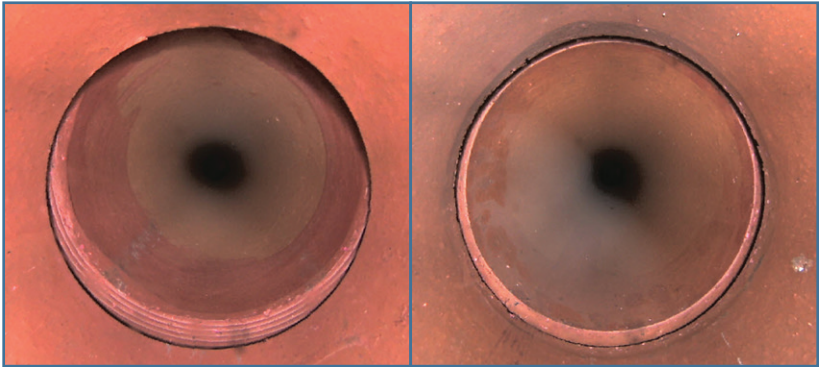


Figure 16: Joint offsets can occur during construction. If they are within allowable tolerances, they will not affect the performance of the pipeline.

Joint offsets during construction must be kept within allowable tolerances. Differences in roundness and dimensional inside diameter should be within tolerances for the pipe as specified in ASTM C700 and ASTM C1208. These variations should not be considered a parallel joint offset. Joint end trim may give the illusion of a parallel offset. Note the distortion of these minor offsets as they may appear much larger than actual. Observe the camera as it moves over the joint. If the camera tilts up or down this gives some indication of the magnitude of any offset.



*Figure 17: 5/8-inch Parallel Offset
Bell/Spigot gaskets removed for illustration purposes*

*Figure 18: 3/8-inch Parallel Offset
Bell/Spigot gaskets poured non-concentric for illustration purposes*

If an offset is within ASTM standards or if it passes a Low-Pressure Air Test, it will not effect the performance of the pipeline or the integrity of the pipe.