

Laterals / Service Connections

The camera in the mainline provides a partial view of the joint connection at the Y-branch spur and the curve for a service connection. Two images were captured using an 8x6-inch wye branch and a 30° curve. The first image shows a tight and square joint connection and the second has a ¾-inch gap. While the measured gaps are significantly different, they appear the same in the CCTV image from the mainline. Because of this visual similarity, an assessment cannot be made for the lateral connection via CCTV inspection from within the sewer mainline.

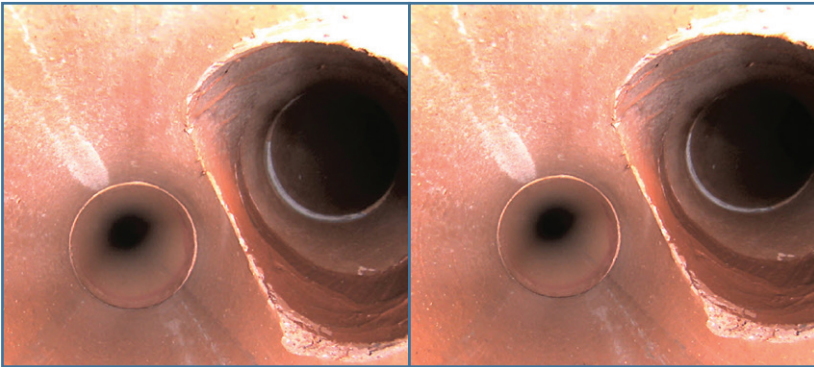


Figure 36: Wye Branch connection at 30° curve: Zero angular deflection and no gap *Figure 37: Wye Branch connection at 30° curve: Maximum angular deflection and ¾-inch gap*